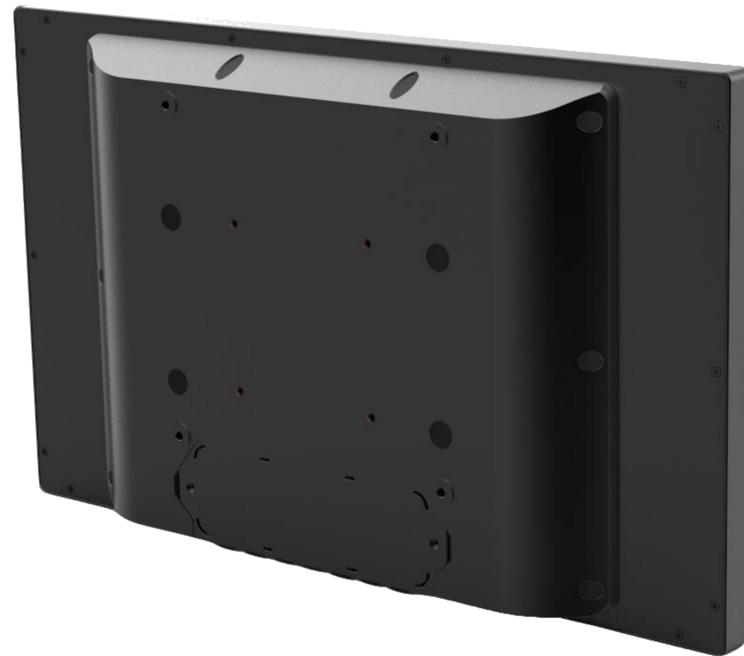
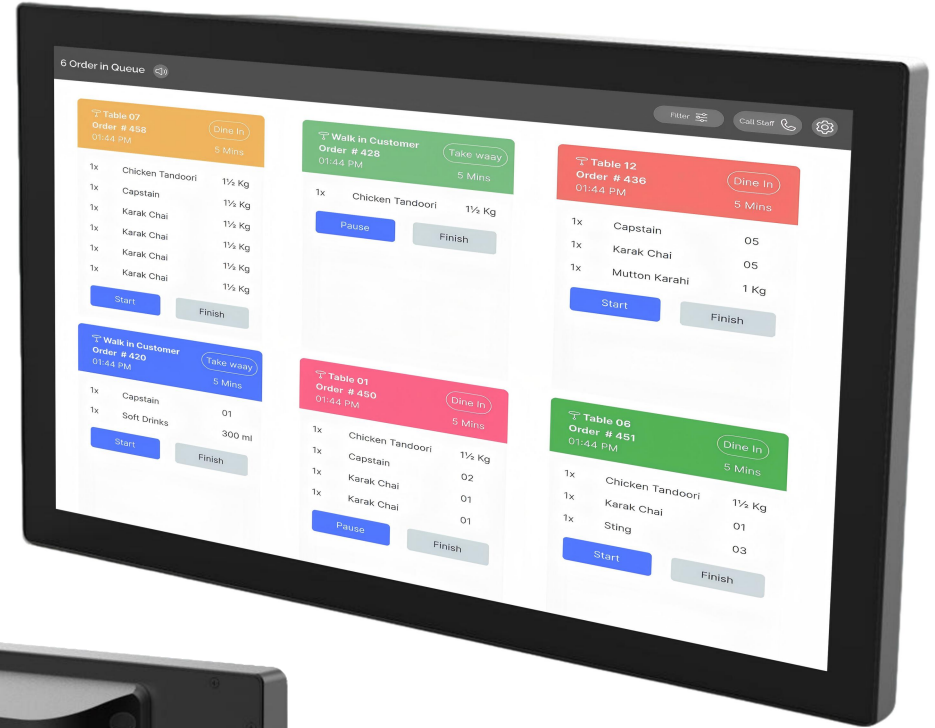


PPC-215GP

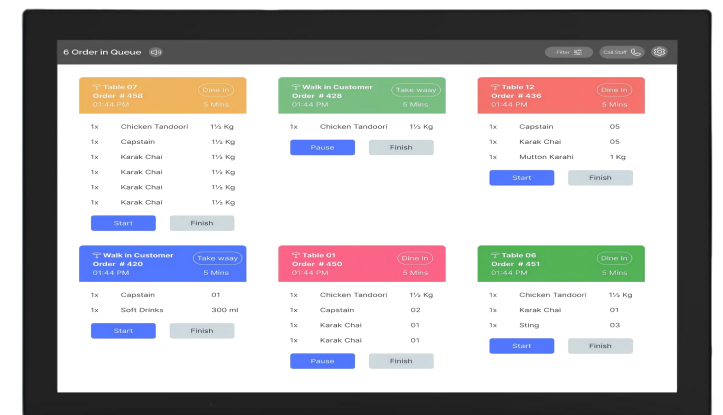
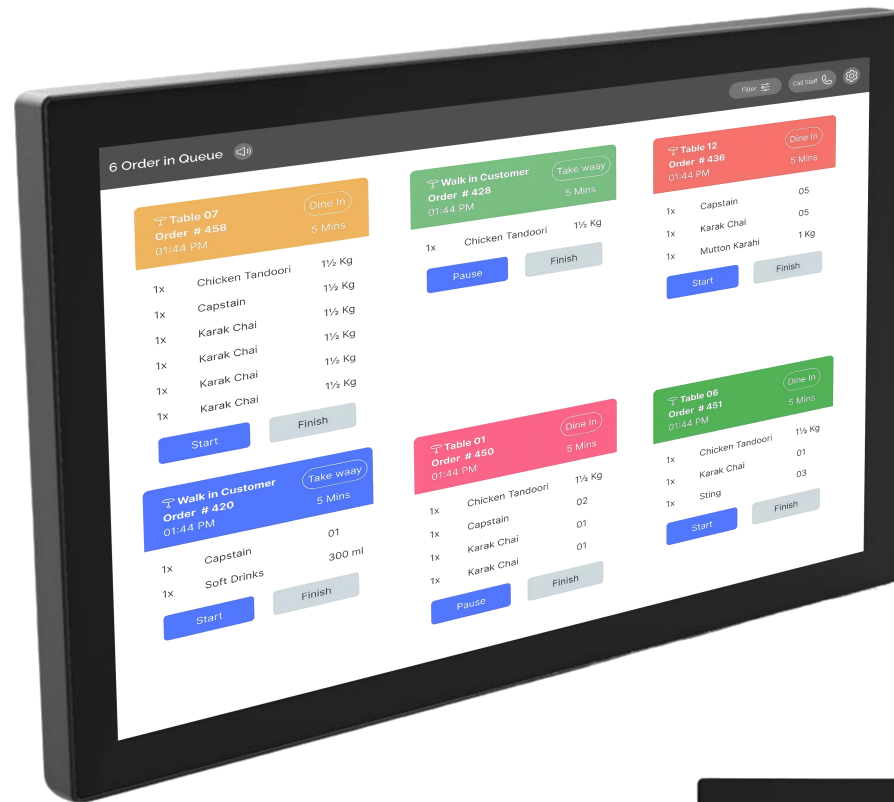
Kitchen Display Terminal



PPC-215GP

Kitchen Display Terminal

FENGYU



PPC-215GP

Kitchen Display Terminal



Main Features

- **21.5" All-in-One Terminals** – Purpose-built for kitchen and other demanding industrial environments.
- **Rugged Construction** – Features a robust, tempered-glass display and a fanless system enclosed in a durable metal housing.
- **Industrial-Grade Reliability** – Built with high-quality electronic components to ensure maximum uptime and long-term stability.
- **Sealed Cable Design** – Innovative SR (strain relief) design with female connector plugs allows for easy cable extension while maintaining a secure and sealed connection.
- **Multi-Platform Support** – Compatible with both Android and Linux operating systems.
- **High-Visibility Touch Display** – Bright, clear, and highly responsive touchscreen that functions reliably even with wet fingers or latex gloves.
- **Exceptional Resistance** – Fully resistant to water, grease vapor, and food acids, ideal for high-humidity or food-prep areas.
- **Hygienic Design** – Smooth, seamless surfaces with an edgeless construction make cleaning simple and ensure full hygiene compliance.
- **Optional Software** – Can be equipped with Heng Yu Kitchen Display software for streamlined kitchen operations.
- **Accessory Compatibility** – Supports optional Heng Yu bump bars for enhanced workflow control.

PPC-215GP

Cable outlet method & Waterproof cover design



- Heng Yu Technology (HK) Limited
- <http://www.hengyu-tech.com>

PPC-215GP-12thCPU
Windows System

Features	Model	PPC-215GP-N97	PPC-215GP-SI3	PPC-215GP-SI5
Processor	CPU	Intel® Alder Lake-N Series Processor	Intel® 12th i3-1215U	Intel® 12th i5-1235U
	Number of Core	4E	2P4E	2P8E
	Frequency	Up to 3.60GHz	Up to 4.4GHz/3.3GHz	Up to 4.4GHz/3.3GHz
Memory	Technology	Support DDR4 SO-DIMM 3200MT/S, 1*non-ECC SO-DIMM Slot		
	Max. Capacity	Up to 32GB		
Display	Controller	Intel UHD Graphics	Intel UHD Graphics	Intel Iris Xe Graphics
	Graphic Memory	Up to 24 EUs, 1.20Ghz	Up to 64 EUs,1.10 GHz	Up to 80 Eus, 1.20
	Main Display Resolution	21.5" (1920 x 1080), ratio 16:9		
	Active Area	476.64 x 268.11(mm)		
	Luminance	250cd/m2		
	Viewing Angle (R/ L/ U/ B)	89/ 89/ 89/ 89		
	Touch Panel	PCAP, USB protocol		
Ethernet	Controller	Realtek GBE LAN Chip (RJ45, 10/100/1000 Mbps)		
Storage	Primary	M.2 (NGFF) Key B/B+M Slot (SATA SSD, 2280)	M.2 (NGFF) PCIe x4 Key M Slot (NVME SSD, 2280)	
I/O Interface	Main USB	4 x USB-A 3.0		
	Audio	Line-Out/ Mic 3.5mm Jack		
	Serial	DB9 x 1		
	LAN	RJ45 / POE++ LAN (Optional)		
Options	Bumpbar	BB20A / MK15F / USB Speaker		
Power Adaptor	Input	Universal AC 100~240V, 50/60 Hz		
	Output	DC +12V 5A/		
Environment	Storage Temperature	-15°C ~ 55°C		
	Operation Temperature	-0°C ~ 40°C		
	Operation Humidity	10% ~ 85%		
Mounting	Standard	VESA Mount 200 x 200 (mm)		
Dimension	Panel (w/o stand)	530 x 317 x 60 (mm)		

- Heng Yu Technology (HK) Limited
- <http://www.hengyu-tech.com>